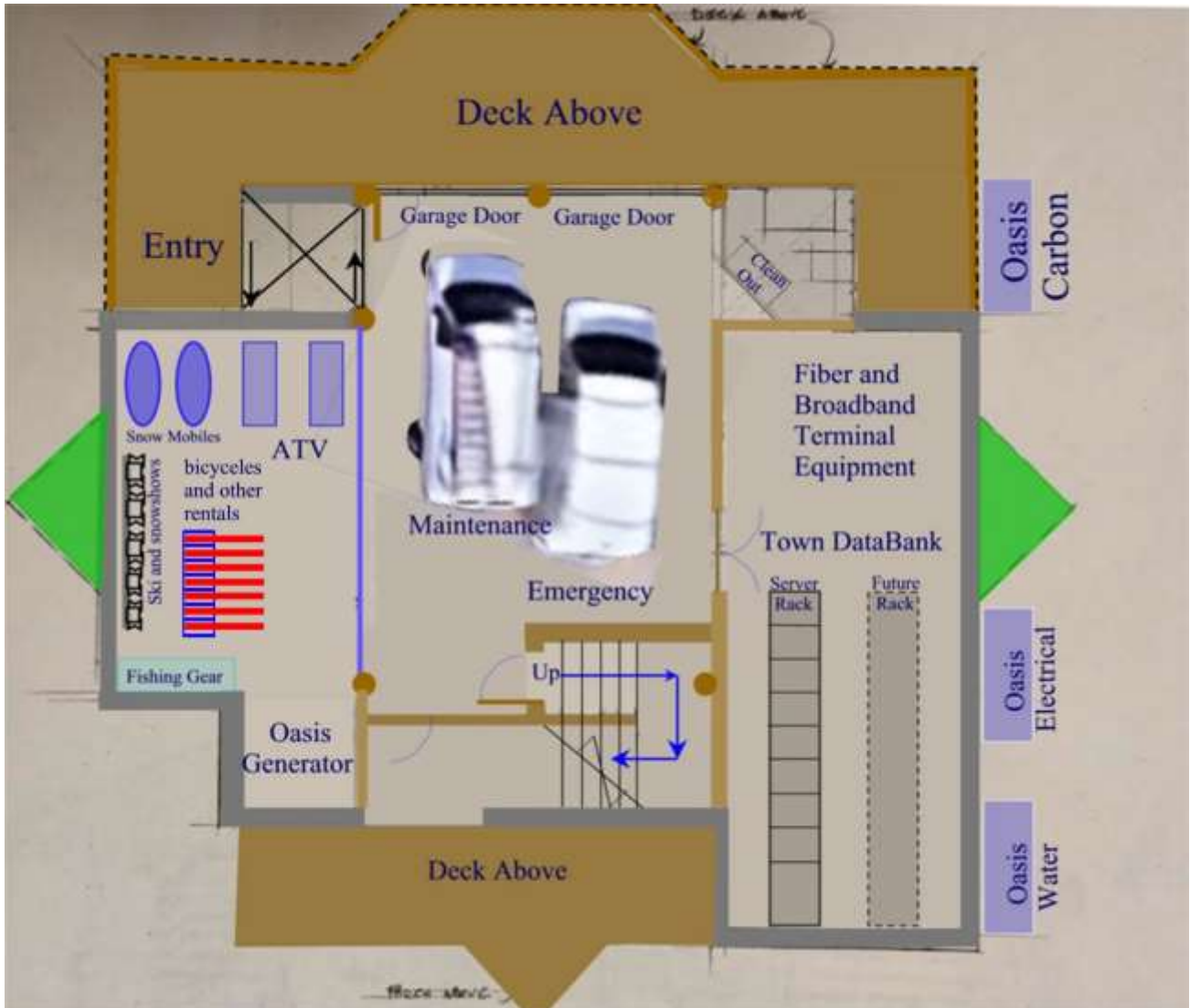


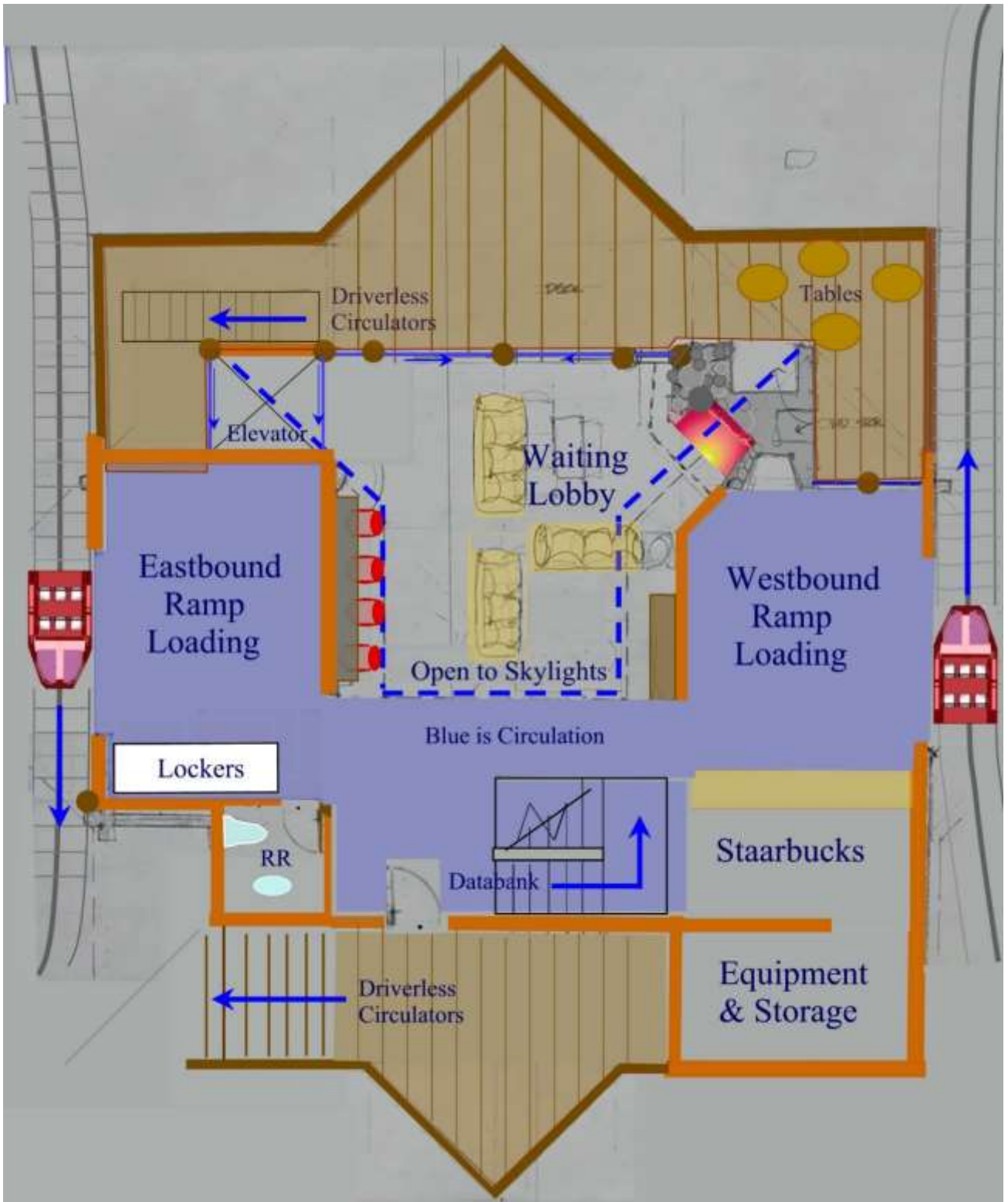
These Log Cabin Stations Match the Mountain Look

more than our urban Stations do. The yellow line illustrates a path of a driverless circulator. There are about 15 to 20 stations in the mountains where this may be more appropriate. The size of the station is about 3,000 sf on 3 levels. The larger station allows travelers to wait inside. This image shows the Smart Skyways vehicles traveling across the deck from left to right and stopping for loading at the doors in the middle.



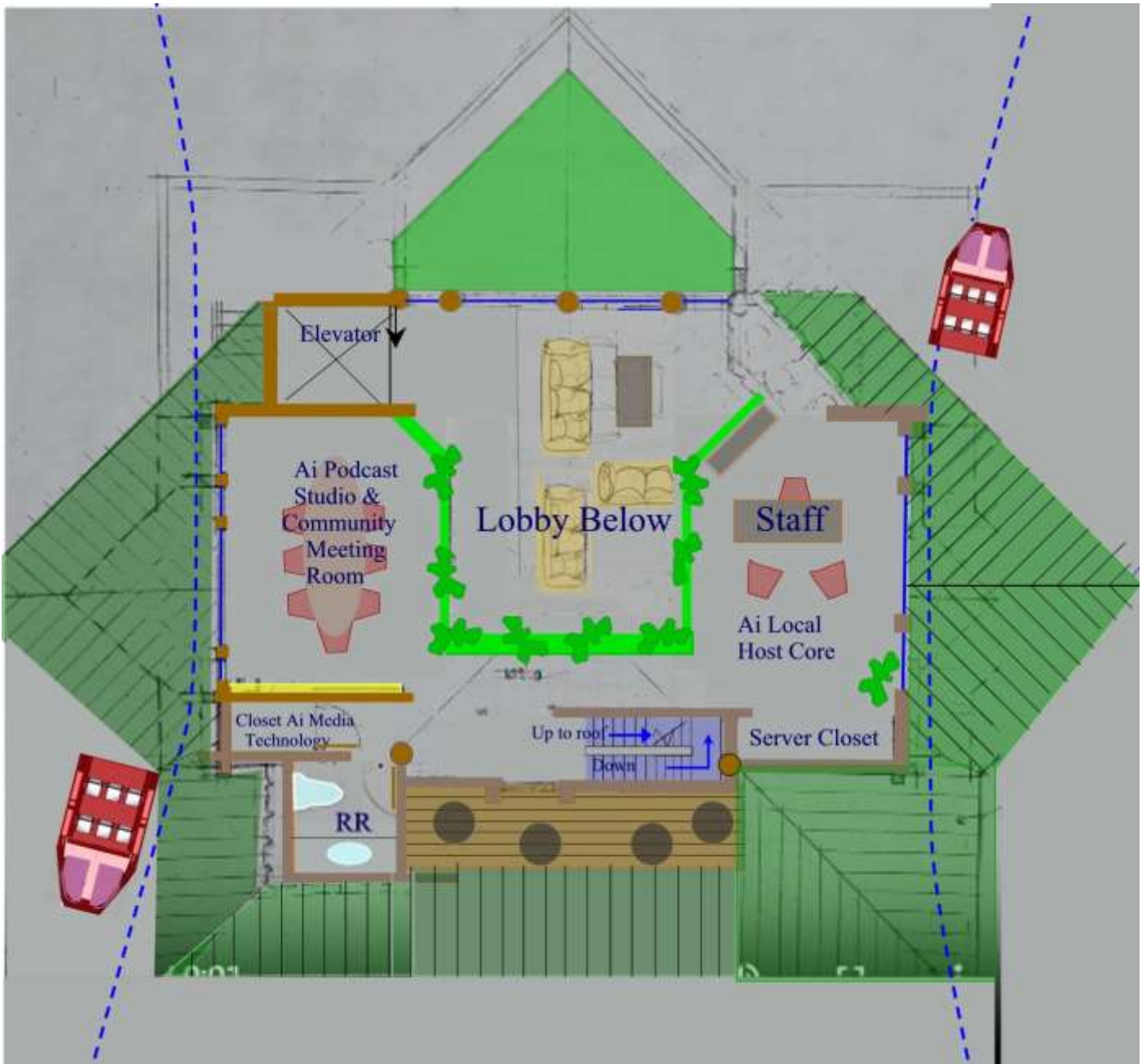
The Ground Floor has Access to Driverless Circulators that roam the Town on dedicated routes. The loading area is in the Front under the Skyways Station from in the second floor above. Databank, Transmission Terminals, Oasis Electric Generators, Truck Storage, Elevator and Outdoor Rentals





By providing traveler services, like Starbuck, CPU plug In, fireplace, lockers, outside tables and lobby waiting, the station is more popular and functional.

3rd Floor Smart District Administration Offices and AI Studio



This level pays the rent. Income from the Smart District will pay the cost of staffing this floor and help build it. The dotted lines above show the route of the Skyways car below. The smart grid is operated from the room at the right where the local AI servers process the data and store it in the Databank on the ground floor. The AI Media is operated from a conference room and AI Studio at the left. The driverless circulators can be paid for from the earnings of these two smart district infrastructures.

An Example of a Smart District Mountain Cabin Look



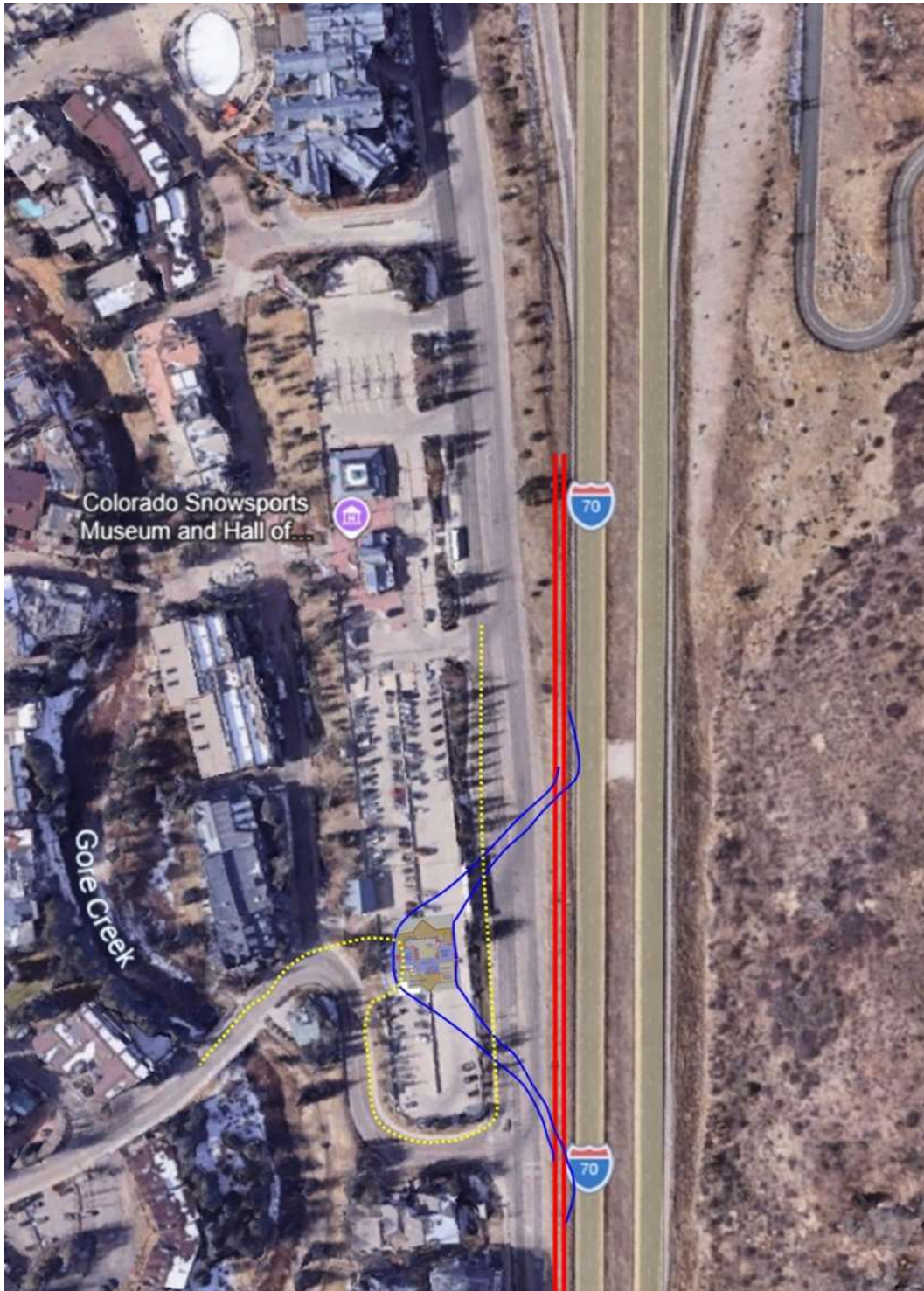
Solar Roof tiles

Entry

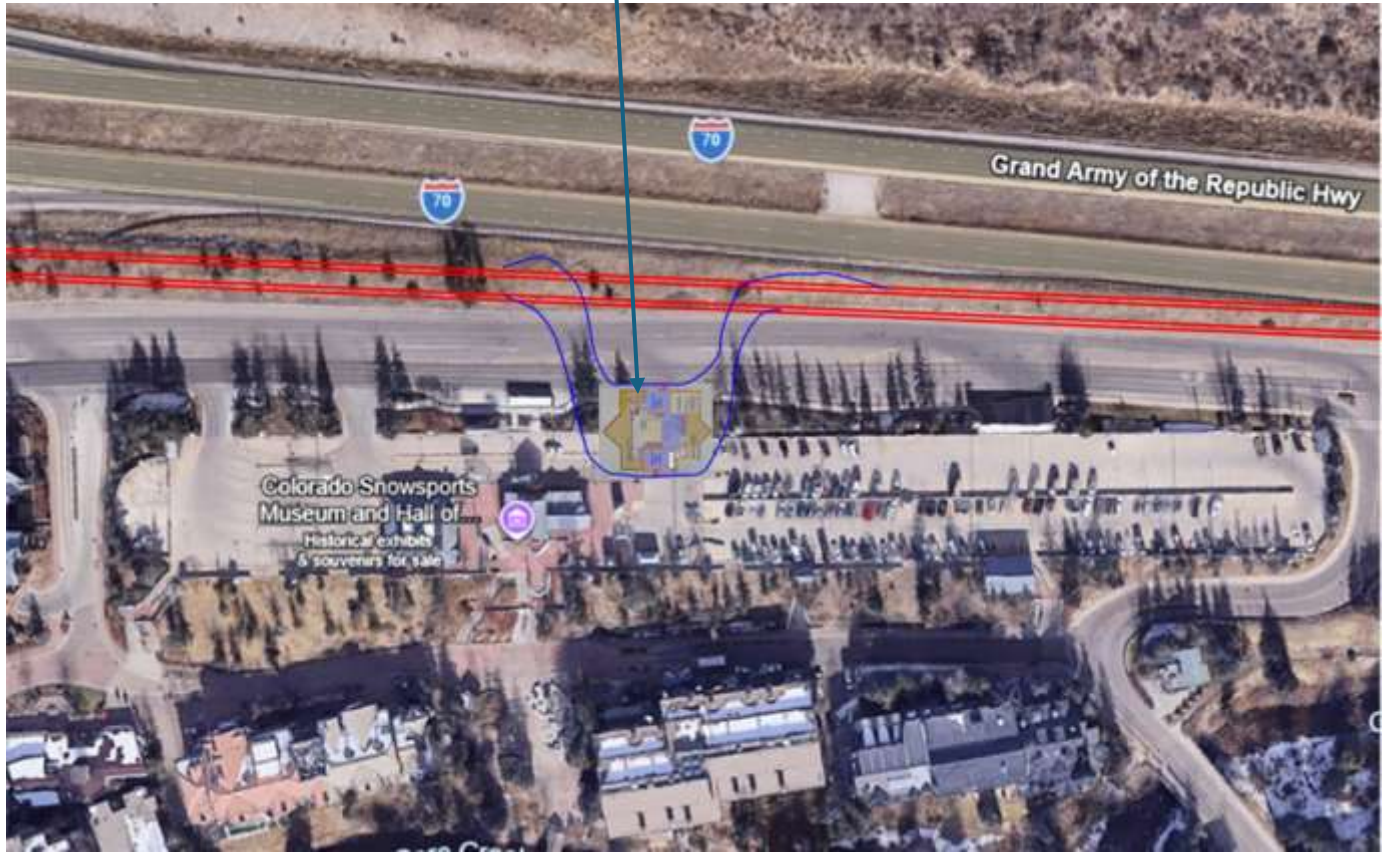
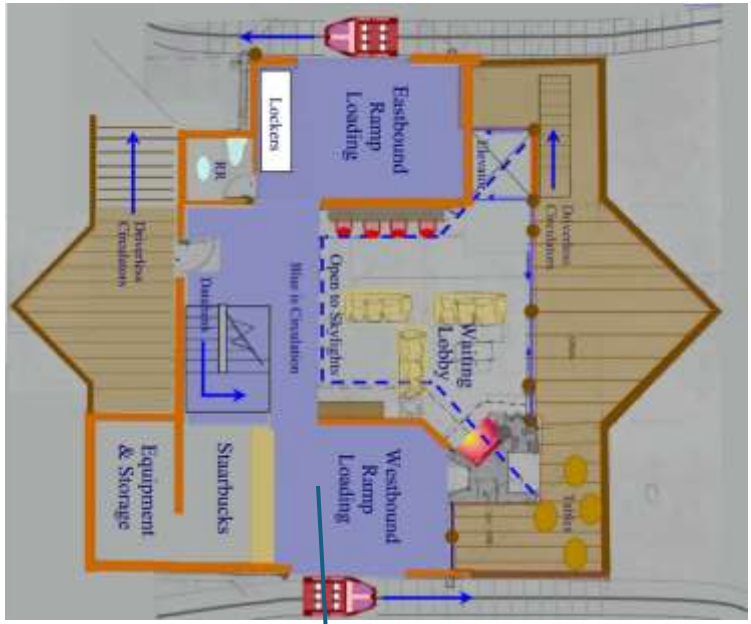
Driverless Circulator
Loading

Alternative location Not so Crowded

Easier off/on ramps from I-70 with Skyways on the side east instead of in the middle of I-70. Yellow line illustrates a driverless circulator from Skyways Station to destination



2nd Floor of Station Mixing Travelers a Lobby, Starbucks, outdoor tables, fireplace (artificial) elevator, decks, lockers, Internet plug in counter for devices and Restroom



This is just east of the first one showing the ramps configuration